



SHUNWANG
APPAREL

FACTORY PROFILE

High-end sports knitwear manufacturer for global OEM/ODM programs. Established in 2008, backed by 25 years of apparel export experience.

EST. 2008

25 Years Experience

15,000 sqm

100,000+ pcs/month

300+ Equipment

Prepared for international OEM/ODM business communication



Company Snapshot

A focused manufacturer of performance sports knitwear and swimwear for international buyers.

2008

Established
Company established in 2008

25 yrs

Export Experience
Foreign-trade apparel know-how

15,000 sqm

Production Base
Integrated manufacturing facility

233

Employees
Skilled production and QC teams

100,000+

Monthly Output
Flexible monthly capacity

Company Positioning

Zhejiang Shunwang Sports Goods Co., Ltd. supplies high-end sports knitted apparel for overseas markets. Core categories include yoga wear, compression wear, cycling wear, combat sportswear and swimwear. The factory supports OEM/ODM development, fabric sourcing, sampling, bulk production, QC and private-label packing.

Global Business Support

- Global market support according to buyer requirements.
- Sample development from 7 days when materials and patterns are confirmed.
- MOQ from 500 pcs per style/color; final MOQ depends on fabric, print and trims.
- Bulk lead time from 30 days after approvals and material readiness.



Factory Entrance
Modern production base



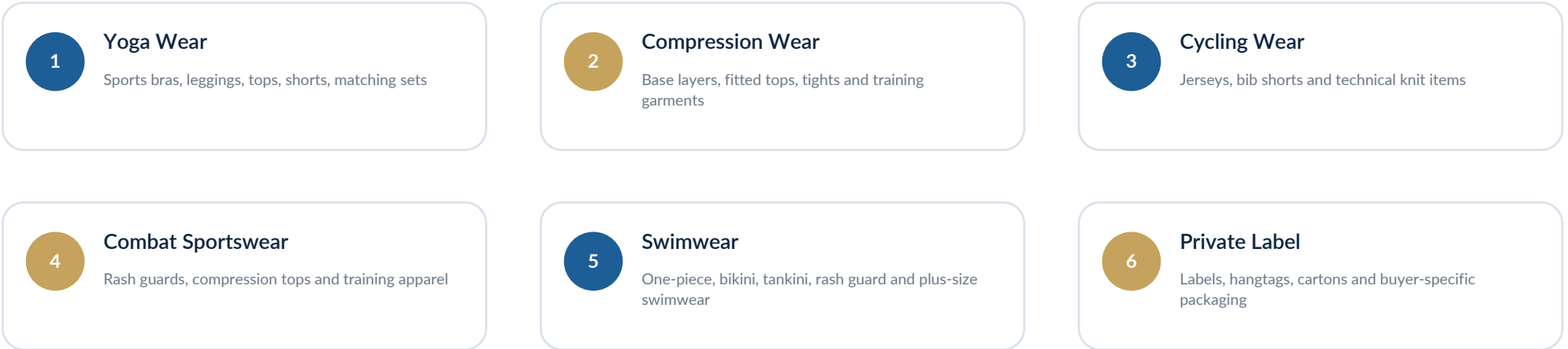
Production Workshop
Organized sewing operation



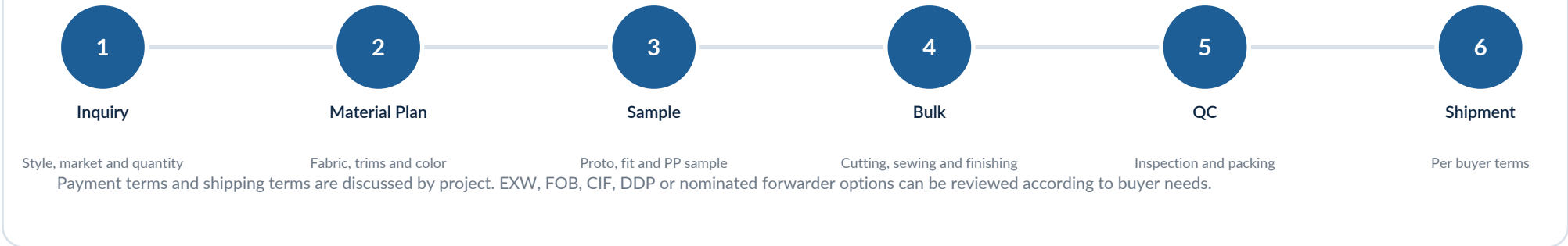
Quality Area
Inline and final inspection

Core Capabilities

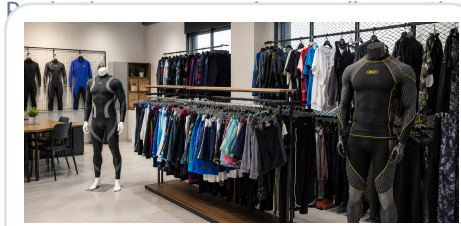
OEM/ODM support from product concept to delivery.



OEM/ODM Service Flow



Factory Facility Tour



Sample Room
Development and fitting



Automatic Cutting
Precise bulk cutting



Laser Cutting
Detail cutting support



Hanging Line
Streamlined handling



Fabric Inspection
Incoming review



Warehouse
Material and finished goods



Packing Area
Final packing



Showroom
Product display

Factory management focus: clear production zoning, automation-supported cutting and production flow, and quality checkpoints from incoming materials through final packing.

Design, Development & Sampling

Fast sampling and product engineering for high-stretch performance garments.



Development Strength

- Long-term collaboration with design resources and schools in Japan and Italy.
- Support for buyer sketches, reference samples, tech packs, measurement specs and artwork.
- Fastest sample development from 7 days when materials and patterns are confirmed.
- Fit, grading and construction review for yoga wear, swimwear, cycling and combat sportswear.

Sample Stage	Purpose
Proto Sample	Initial construction and appearance review
Fit Sample	Size, balance, comfort and movement assessment
PP Sample	Pre-production approval before bulk start
TOP Sample	Top-of-production reference for shipment

Recommended buyer input: style sketch or reference photo, size range, fabric composition/GSM target, Pantone or color reference, print artwork, trim details, packaging and testing requirements.

Fabric Platform & Testing Support

Nylon, polyester and elastane blends for stretch, recovery, durability and comfort.



Nylon / Polyamide

- Soft, smooth hand feel for close-to-skin garments.
- Excellent stretch and body-hugging comfort with elastane.
- Suitable for yoga wear, swimwear, sports bras and plus-size activewear.

Polyester Platform

- Stable, durable and quick-drying for swim and outdoor use.
- Supports sublimation, digital print and chlorine-resistant programs.
- Recycled polyester options can be reviewed when certified materials are required.

Performance Area	Suggested Standards / Methods	Sales Language
Color Fastness	ISO 105-C06 / E04 / X12 / E03	Grade 4-5 or Grade 5 target upon test requirement
Chlorine Resistance	ISO 105-E03 / buyer method	Chlorine-resistant swimwear fabric options
Stretch & Recovery	ASTM D2594 / buyer method	4-way stretch, high recovery and movement comfort
Abrasion / Pilling	ISO 12947 / ISO 12945	Durability for training and frequent use
UV Protection	EN 13758-1 / AATCC TM183	UPF protection can be tested when claimed

REACH-compliant material control and buyer RSL requirements can be supported. Certification marks such as OEKO-TEX, GRS or RCS should be used only when valid documents are available for the specific order scope.

Quality Control System

Quality checkpoints are integrated through material, cutting, sewing, measurement, packing and final release.



Quality Principles

- Incoming fabric and trim inspection before cutting.
- Cutting accuracy and bundle control.
- Inline sewing inspection to reduce rework.
- Final inspection before packing and carton release.
- Retention samples and inspection records for repeat orders.

QC Stage	Key Checks	Output
Material Inspection	Fabric defects, color shade, GSM, width, stretch, shrinkage, trims	Approved lot / issue report
Cutting Inspection	Pattern placement, quantity, shade control, print direction, panel size	Cut panel approval
Inline Inspection	Seams, needle work, symmetry, tension, thread ends, label position	Corrective action
Final Inspection	Appearance, measurements, workmanship, labeling, packing, carton marks	Shipment decision

Brand Cooperation References

Brand marks are shown only as cooperation references and must be used with proper authorization.

Cooperation Reference Board



According to company-supplied information, Shunwang has been a domestic designated supplier/reference partner for major sports brands including lululemon and SKINS. Brand logos are shown as cooperation references only; trademarks belong to their respective owners. Confirm customer authorization before public distribution.

Why Work With Shunwang

A practical supply partner for high-stretch sports knitwear and swimwear programs.

Key Advantages

- 25 years of foreign-trade apparel know-how and a company established in 2008.
- 15,000 sqm production base, 233 employees and 300+ automated equipment.
- Core focus on yoga, compression, cycling, combat and swimwear knit garments.
- Fast sample response and flexible OEM/ODM development support.
- Global market support with buyer-specific payment and shipping arrangements.

Recommended Next Step

Send a style sketch, reference sample or tech pack. Shunwang will evaluate fabric, trims, construction, MOQ, sample lead time, bulk lead time and testing requirements, then provide a project-based quotation.

MOQ from 500 pcs | Sample from 7 days | Bulk from 30 days

Zhejiang Shunwang Sports Goods Co., Ltd.

Shunwang Apparel | High-End Sports Knitwear OEM/ODM Manufacturing

Contact details can be added by the sales team before external distribution.